

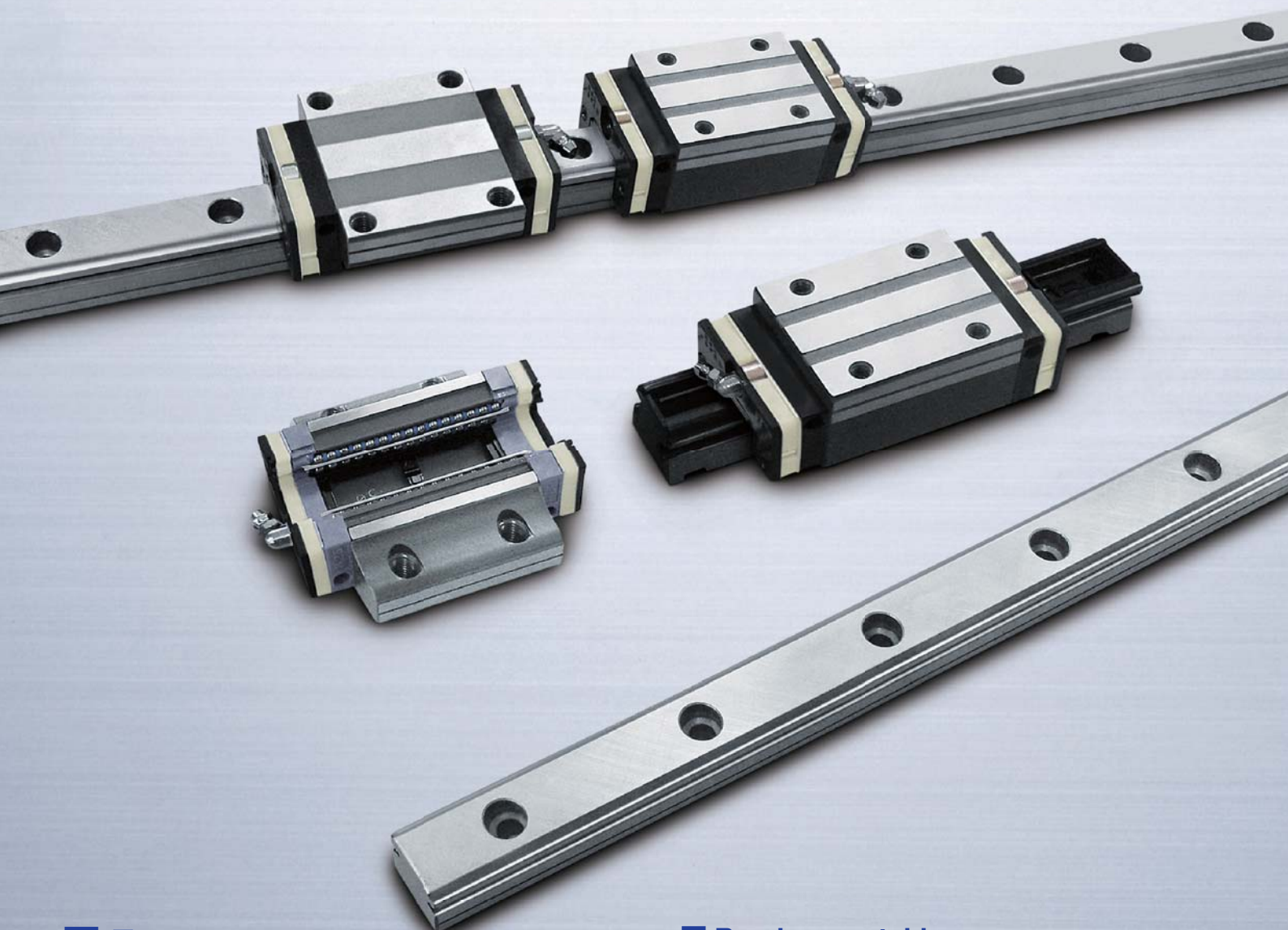
NSK Linear Guides™ Random-matching



MOTION & CONTROL™
NSK

RoHS
compliant

Precision grade / Medium preload



■ Features

1. Interchangeable rails and ball slides / Quick delivery

Universal combination between ball slide, accuracy and preload.

2. Self-aligning capability

Compensates for installation errors and enables smooth operation.

3. Wide range of accessories

“NSK K1™” lubrication unit, Double seal, Protector, etc.

■ Random-matching

Combinations of accuracy and preload

Ball slide preload \ Rail accuracy	Slight preload ZZ	Medium preload ZH NEW
Normal grade PC	●	●
Precision grade PH NEW	●	●

NSK Linear Guides™ Random-matching

Line-up of Random-matching

Series	Size	Ball slide model							Accuracy		Preload		Grease choice/ Surface treatment	
		AN	AL	BN	BL	CL	EM	GM	JM	Precision grade PH	Normal grade PC	Medium preload ZH		Slight preload ZZ
LH	15	○	○				○	○		○	○	○	○	○
	20	○		○			○	○		○	○	○	○	○
	25	○	○	○	○		○	○		○	○	○	○	○
	30	○	○	○	○		○	○		○	○	○	○	○
	35	○	○	○	○		○	○		○	○	○	○	○
SH	15	○		○			○	○		○	○	○	○	○
	20	○		○			○	○		○	○	○	○	○
	25	○		○			○	○		○	○	○	○	○
	30	○		○			○	○		○	○	○	○	○
	35	○		○			○	○		○	○	○	○	○
LS	15		○			○	○		○	○	○	○	○	○
	20		○			○	○		○	○	○	○	○	○
	25		○			○	○		○	○	○	○	○	○
	30		○			○	○		○	○	○	○	○	○
	35		○			○	○		○	○	○	○	○	○
SS	15		○			○	○		○	○	○	○	○	○
	20		○			○	○		○	○	○	○	○	○
	25		○			○	○		○	○	○	○	○	○
	30		○			○	○		○	○	○	○	○	○
	35		○			○	○		○	○	○	○	○	○

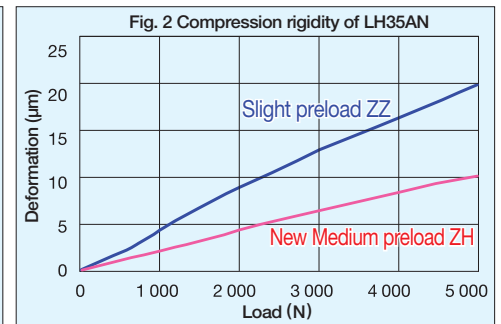
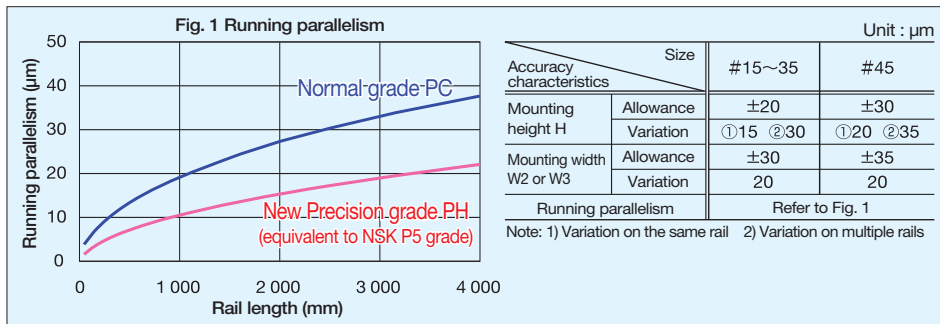
Ball slide model

Model	Cross-section shape	Ball slide length
AN AL		
BN BL		
CL		
EM		
GM		
JM		

Accuracy

Running parallelism of PH grade is equivalent to P5 grade of NSK matched rail / ball slide assembly. The preload can be specified as ZH or ZZ. Accuracy grade (running parallelism) can be specified as PH or PC. Assembly accuracy of PH grade is shown below.

Preload and rigidity



Part number

【For ball slide only】
Example : LAH 25 AN H **

Series: LAH: LH Series, SAH: SH Series, LAS: LS Series, SAS: SS Series

Preload Z: Slight preload, H: Medium preload

Shape/height AN, AL, BN, BL, CL, EM, GM, JM

Size

NSK control number

【For rail only】
Example : L1H 25 0520 L C N *** PH Z

Series L1H: LH, SH Series, L1S: LS, SS Series

Size

Rail length (mm)

Shape L: Standard

Preload Z: Slight preload, H: Medium preload

Accuracy grade PH: Precision grade, PC: Normal grade

NSK control number

Butting rail specification N: Non-butting, L: Butting

Material C: Carbon steel

【For assembly】
Example : LH 25 0520 AN C 2 *** PH H

Series LH, SH, LS, SS

Size

Rail length (mm)

Shape/height AN, AL, BN, BL, CL, EM, GM, JM

Material C: Carbon steel

Preload Z: Slight preload, H: Medium preload

Accuracy grade PH: Precision grade, PC: Normal grade

NSK control number

Number of ball slides per rail

For more information about NSK products, please contact: www.nsk.com



NSK used environmentally friendly paper and printing methods for this publication.